

STORAGE SOLUTIONS

AN ORGANIZED GYM IS IMPORTANT FOR SAFETY AND AESTHETICS.

Keeping your space free from clutter can help boost motivation, prevent tripping, and increase equipment longevity. In addition to top-notch strength equipment, Legend Fitness has storage items to help keep your space free of clutter and your accessories looking great.

CHECK OUT MORE LEGEND FITNESS INSTALLATIONS ONLINE.

Visit our website to get a look at corporate wellness centers, health clubs, athletic training centers, private gyms, and other showcases from all over the world. See the showcases featured here and more online at www.legendfitness.com/showcases.



East Tennessee State University
Tennessee, USA



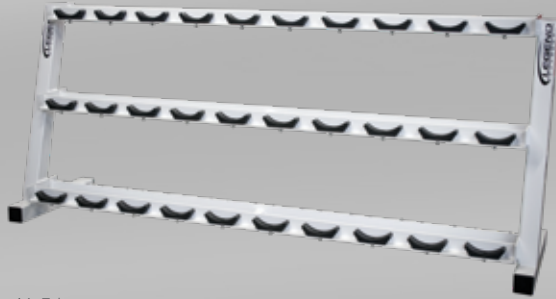
University of Alabama Huntsville
Alabama, USA



Woodhaven High School
Michigan, USA

3191 15 PAIR PRO STYLE DUMBBELL RACK

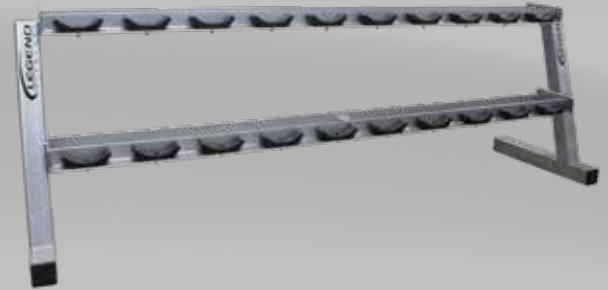
Three tiers to hold the maximum number of dumbbells.
For round head (pro style) dumbbells.
Fully welded for maximum durability.
Solid rubber cradles keep round dumbbells from rolling.
Made from 3-inch square, 11 gauge steel tubing.



Dimensions: 96.5 x 24 x 41.5 in.
Shipping Weight: 428 lbs.

3169 10 PAIR PRO STYLE DUMBBELL RACK

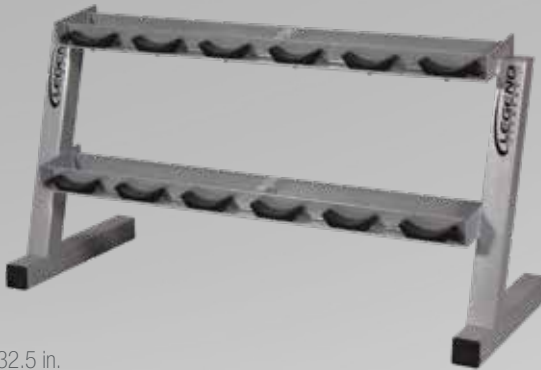
For round head (pro style) dumbbells.
Fully welded for maximum durability.
Solid rubber cradles keep round dumbbells from rolling.
Made from 3-inch square, 11 gauge steel tubing.



Dimensions: 96.5 x 24 x 32.5 in.
Shipping Weight: 367 lbs.

3190 6 PAIR PRO STYLE DUMBBELL RACK

For round head (pro style) dumbbells.
Fully welded for maximum durability.
Solid rubber cradles keep round dumbbells from rolling.
Made from 3-inch square, 11 gauge steel tubing.



Dimensions: 60.5 x 24 x 32.5 in.
Shipping Weight: 278 lbs.

3239 FOUR-TIER HEX HEAD DUMBBELL RACK

Four tiers hold 20 pairs of hex head dumbbells.
Top tier measures just 40.5 inches high.
Fully welded for maximum durability.
ABS lined trays for chip and rust resistance.
3-inch square, 11 gauge steel tubing.



Dimensions: 86 x 24 x 41 in.
Shipping Weight: 450 lbs.

3168 THREE-TIER HEX HEAD DUMBBELL RACK

Only 6 inches taller than two tier model.
Fully welded for maximum durability.
ABS lined trays for chip and rust resistance.
3-inch square, 11 gauge steel tubing.



Dimensions: 86 x 24 x 38 in.
Shipping Weight: 338 lbs.
Weights and bars sold separately.

3118 LONG TWO-TIER HEX HEAD DUMBBELL RACK

Can hold 10 pairs of hex head dumbbells.
Fully welded for maximum durability.
ABS lined trays for chip and rust resistance.
3-inch square, 11 gauge steel tubing.



Dimensions: 86 x 24 x 32 in.
Shipping Weight: 345 lbs.

STORAGE SOLUTIONS

3170 SHORT TWO-TIER HEX HEAD DUMBBELL RACK

Can hold 6 pairs of hex head dumbbells.
Fully welded for maximum durability.
ABS lined trays for chip and rust resistance.
Made from 3-inch square, 11 gauge steel tubing.

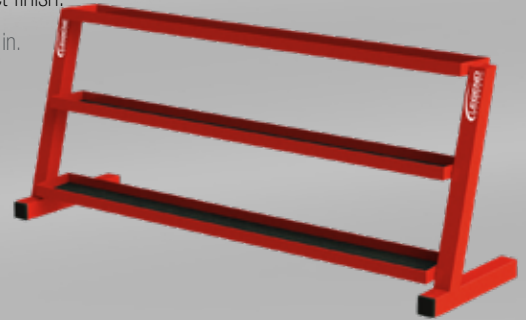
Dimensions: 46 x 24 x 31.75 in.
Shipping Weight: 193 lbs.



3316 LONG THREE-TIER KETTLEBELL RACK

Only 5.5 inches taller than two-tier model.
Fully welded for maximum durability.
Rubber tray liners protect finish.

Dimensions: 86 x 24 x 38 in.
Shipping Weight: 537 lbs.



3317 SHORT THREE-TIER KETTLEBELL RACK

35-inch lift over height for top tier tray.
Fully welded for maximum durability.
Rubber tray liners protect finish.

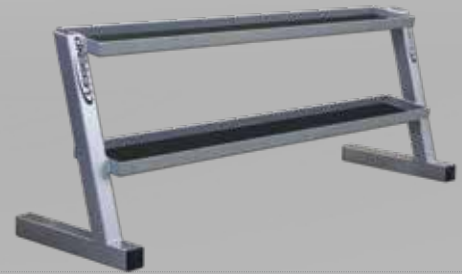
Dimensions: 46 x 24 x 35.5 in.
Shipping Weight: 231 lbs.



3245 LONG TWO-TIER KETTLEBELL RACK

Only a 32-inch high lift over height.
Fully welded for maximum durability.
Rubber tray liners protect finish.

Dimensions: 86 x 24 x 32.5 in.
Shipping Weight: 358 lbs.



3257 SHORT TWO-TIER KETTLEBELL RACK

Only a 32-inch high lift over height.
Fully welded for maximum durability.
Rubber tray liners protect finish.

Dimensions: 46 x 24 x 32.5 in.
Shipping Weight: 207 lbs.



A 3193 & B 3112 PLATEHOLDERS

Choice of Chrome-plated Olympic pegs (3193) or 1" pegs (3112).
Only in our chip-resistant Silver Vein finish.
Fully welded.

Dimensions: 18 x 18 x 42.5 in.
3193 Shipping Weight: 47 lbs.
3112 Shipping Weight: 42 lbs.



3126 A-FRAME PLATEHOLDER

Six 1-inch diameter pegs.
Only in our chip-resistant Silver Vein finish.
Fully welded for durability.

Dimensions: 33.5 x 18 x 38.5 in.
Shipping Weight: 39 lbs.



3313 MULTI STORAGE RACK

Horizontal bumper plate rack.
Rubber-lined kettlebell/accessory rack.
Chrome-plated plate storage.
Olympic bar holders and a chalk bowl.
Available in all powder coat colors.

Dimensions: 67 x 23.5 x 41 in.
Shipping Weight: 265 lbs.



Weights and bars sold separately.

3149 TEN BARBELL RACK

Wearguards on frame and pegs.
Fully welded for maximum durability.
3x3-inch 11 gauge frame.
Available in all powder coat colors.

Dimensions: 43.5 x 26 x 56.5 in.
Shipping Weight: 250 lbs.



3174 FIVE BARBELL RACK

Wearguards on frame and pegs.
Fully welded for maximum durability.
3x3-inch 11 gauge frame.
Available in all powder coat colors.

Dimensions: 29 x 30 x 59.5 in.
Shipping Weight: 190 lbs.



3159 ACCESSORY RACK

Fully welded construction.
Frame and peg wearguards.
Foam rubber-lined top tray.

Dimensions: 42 x 16 x 59 in.
Shipping Weight: 190 lbs.



3163 HORIZONTAL BUMPER RACK

Holds eight Olympic bumper plates.
Portable via wheels and handle.
Only in our chip-resistant Silver Vein finish.
Available with wider spacing as 3163-W.

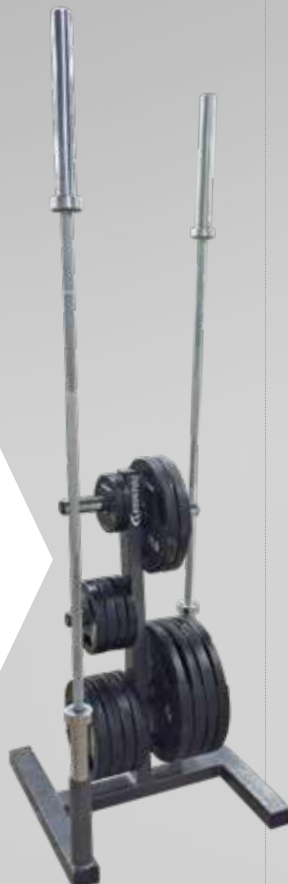
Dimensions: 54.75 x 11 x 10.5 in.
Shipping Weight: 43 lbs.



3173 PLATEHOLDER/ORGANIZER

Small footprint excellent for tight spaces.
Six 1-inch diameter pegs.
Only in our chip-resistant Silver Vein finish.
Fully welded for durability.

Dimensions: 26 x 26 x 42 in.
Shipping Weight: 125 lbs.



3137 OLYMPIC BAR HOLDER

Only available in our chip resistant Silver Vein finish.
Fully welded.
Minimizes risk of falling bars.

Dimensions: 22 x 18 x 10.5 in.
Shipping Weight: 50 lbs.



DON'T HAVE ANYTHING TO STORE? WE CAN HELP WITH THAT!

Legend Fitness can supply you with bars, plates, bumper plates, kettlebells, dumbbells, medicine balls, and other accessories to help you complete your gym or athletic training facility. Contact your Legend Fitness representative for more details.

Weights and bars sold separately.