

BARS

COMPLETE YOUR FACILITY WITH BARS FROM LEGEND FITNESS.

Our Olympic bars are machined, tested, and manufactured in the USA, with the highest quality materials, like all other Legend Fitness products. We also have the ability to get you any other kind of Olympic bars, specialty bars, barbells, dumbbells, and plates.

CHECK OUT MORE LEGEND FITNESS INSTALLATIONS ONLINE.

Visit our website to get a look at corporate wellness centers, health clubs, athletic training centers, private gyms, and other showcases from all over the world. See the showcases featured here and more online at www.legendfitness.com/showcases.



Anytime Fitness
Colorado, USA



Central Lyon High School
Iowa, USA



Legend Fitness Showroom
Tennessee, USA

LGD-OLY-BLK LEGEND FITNESS OLYMPIC BAR



Great strength, sleeve spin, and whip characteristics coupled with high quality construction make this one of the best values on the market for an Olympic barbell. This model features bright zinc plated sleeves and a black zinc plated bar. The knurl has a low-rise for those that don't care for the sharp stuff. Each sleeve features long 16.5-inch plate load areas, a 1-inch thick collar, and dual Oilite bushings that provide just the right amount of spin.

This bar exhibits a medium amount of whip during Olympic movements and carefully selected alloys keep everything strong and straight.



28.5mm bar diameter.
Light knurl texture.
No center knurling.
Moderate whip.
Olympic and powerlifting marks.
Dual Oilite bronze bushings per sleeve.
Dual snap ring ends per sleeve.
Bright zinc plated sleeves.
Black zinc plated bar.
Maximum tensile strength: 190K
Maximum yield strength: 175K

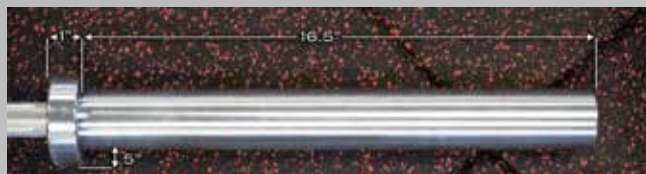
Shipping Weight: 45 lbs.

LGD-PB-BRT LEGEND FITNESS POWER BAR



Excellent strength and whip characteristics coupled with high quality bushings and thoughtful details make this a bar for discerning athletes. Both bar and sleeves on this model feature a bright zinc finish. The bar itself has a medium-rise knurl that's not too sharp, not too flat. Each sleeve features long 16.5-inch plate load areas; a beveled, 1-inch thick collar; and dual Oilite bushings that provide a good amount of spin.

There's a moderate amount of whip for Olympic movements and carefully selected alloys keep everything strong and straight.



28.5mm bar diameter.
Medium knurl texture.
Center knurling.
Medium whip.
Olympic and powerlifting marks.
Dual Oilite bronze bushings.
Dual snap ring ends per sleeve.
Bright zinc plated sleeves and bar.
Maximum tensile strength: 190K
Maximum yield strength: 175K

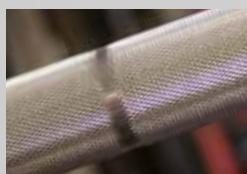
Shipping Weight: 45 lbs.

LGD-NBB-20KG-BRT LEGEND FITNESS BEARING BAR



The Legend Fitness Bearing Bar is a reasonably-priced, American-made bar with ten bearings. You get all the spin and quality you need without a price that will break your budget. Manufactured to Legend specifications, this bar is 100% made in the USA from turned, ground and polished steel. Featuring Olympic marks only with light knurling (but no center knurling) and bright zinc plating, this bar provides the right amount of grip and hand placement information for explosive lifts.

The ten needle bearings are packed with quality lubrication, but once that loosens up a bit, they will spin and spin and spin! Sleeves are zinc plated, with 16.25-inch load length and a beveled 1.25-inch thick collar. If the bearings should ever need servicing, this bar breaks down in the field without the need for a vice or special tools, so you can extend the service life of this bar until it becomes an heirloom.



20kg 28mm diameter bar.
Medium whip.
Light knurling texture.
No center knurl.
5 precision needle bearings per sleeve (10 per bar).
Easily disassembled for service.
Built to IWF spec standards.
Turned, ground, polished steel.
Olympic marks only.
Bright zinc plated sleeves and bar.
Maximum tensile strength: 190K
Maximum yield strength: 175K

Shipping Weight: 45 lbs.